



11/12/2019

Stefano Rossi

# Applicazioni LCA e LCC nei contesti strategici delle Aziende private.

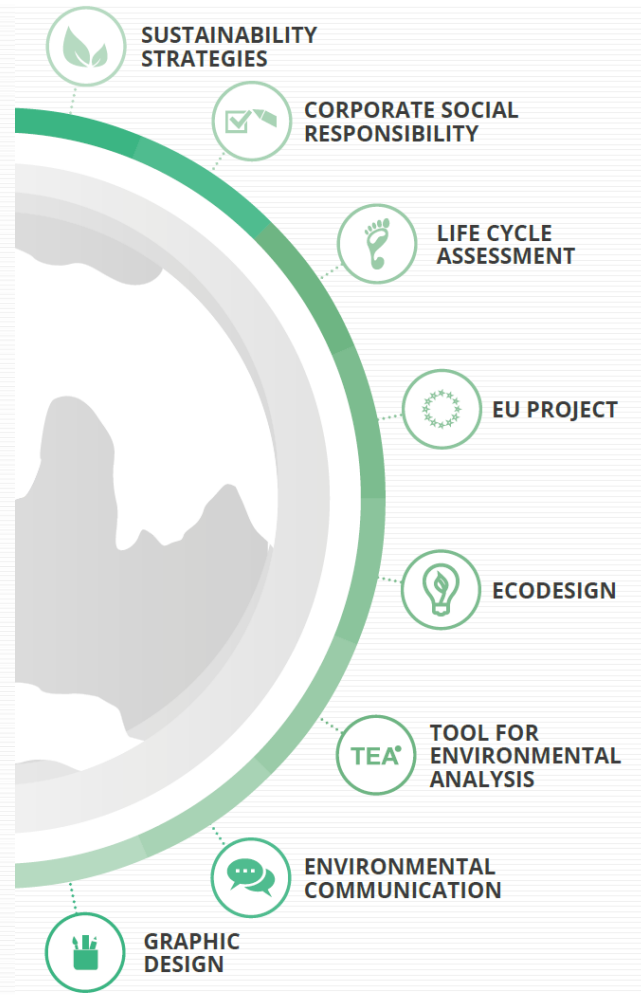
# METTIAMOCI IN RIGA





**THE LCE TEAM**

 <i>Alessandra</i> Industrial Chemist	 <i>Alessia</i> Web/Graphic Designer	 <i>Assunta</i> Environmental Engineer	 <i>Deva</i> Environmental Engineer	 <i>Eleonora</i> Green Marketing & Communication	
 <i>Elisabetta</i> Environmental Scientist	 <i>Francesca</i> Communication Assistant	 <i>Francesca</i> Industrial Ecologist	 <i>Ilaria</i> Communication & Marketing	 <i>Laura</i> Management Engineer	 <i>Paola</i> Chemist
 <i>Paola</i> Administration and human resources	<b>THE LCE TEAM</b>				 <i>Simona</i> Accountant Assistant
 <i>Sonia</i> Environmental Engineer	 <i>Davide</i> Energy Engineer	 <i>Fabrizio</i> Environmental Engineer	 <i>Gian Luca</i> LCA Engineer	 <i>Massimo</i> Environmental Engineer	
 <i>Massimo</i> Energy Engineer	 <i>Massimo</i> Graphic Designer	 <i>Matteo</i> Agronomist	 <i>Riccardo</i> Environmental Engineer	 <i>Stefano</i> Mechanical Engineer	



# LCE LIFE CYCLE ENGINEERING

WE SUPPORT  
YOUR  
SUSTAINABLE  
BUSINESS



# Declinazione delle applicazioni LCA



## ANALISI PRELIMINARI

*Per chi ha bisogno di stime preliminari relative all'impatto del proprio prodotto o processo, che permettano di identificare i punti critici sui quali concentrare le azioni di miglioramento.*



## RICERCA E SVILUPPO

*Per chi ha intenzione di migliorare le prestazioni ambientali del proprio prodotto o sistema e valutarne i progressi nel tempo, ma non necessita di certificare i risultati ottenuti.*



## COMUNICAZIONE ESTERNA

*Per chi vuole impostare un progetto di comunicazione ambientale e ha bisogno di uno studio LCA completo, che fornisca basi solide e certificate per dichiarazioni e comparazioni.*

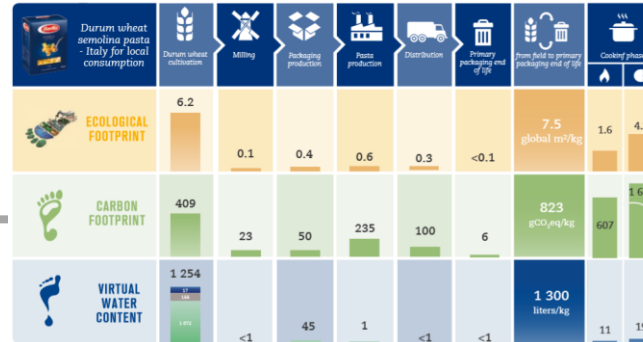
# Dai numeri alla strategia

**Barilla**  
The Italian Food Company. Since 1877.



Powered by  
**TEA**<sup>®</sup>  
Tool for Environmental Analysis

2008: first EPD of pasta



> 70 new EPDs

Found 61 EPD's

Product/Service	Company	Category
Barilla Durum wheat semolina pasta	Barilla	Food & agricultural products
Mulino Bianco Pan Bauletto Bianco	Barilla	Food & agricultural products
Mulino Bianco Cracker salati e non salati	Barilla	Food & agricultural products
Mulino Bianco Fette Biscottate (Dorate, Integrali, Malto d'Orzo, Rustiche e Dolcifette)	Barilla	Food & agricultural products

Improvement protocols



Social media



Corporate commitment

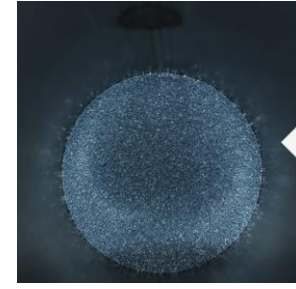
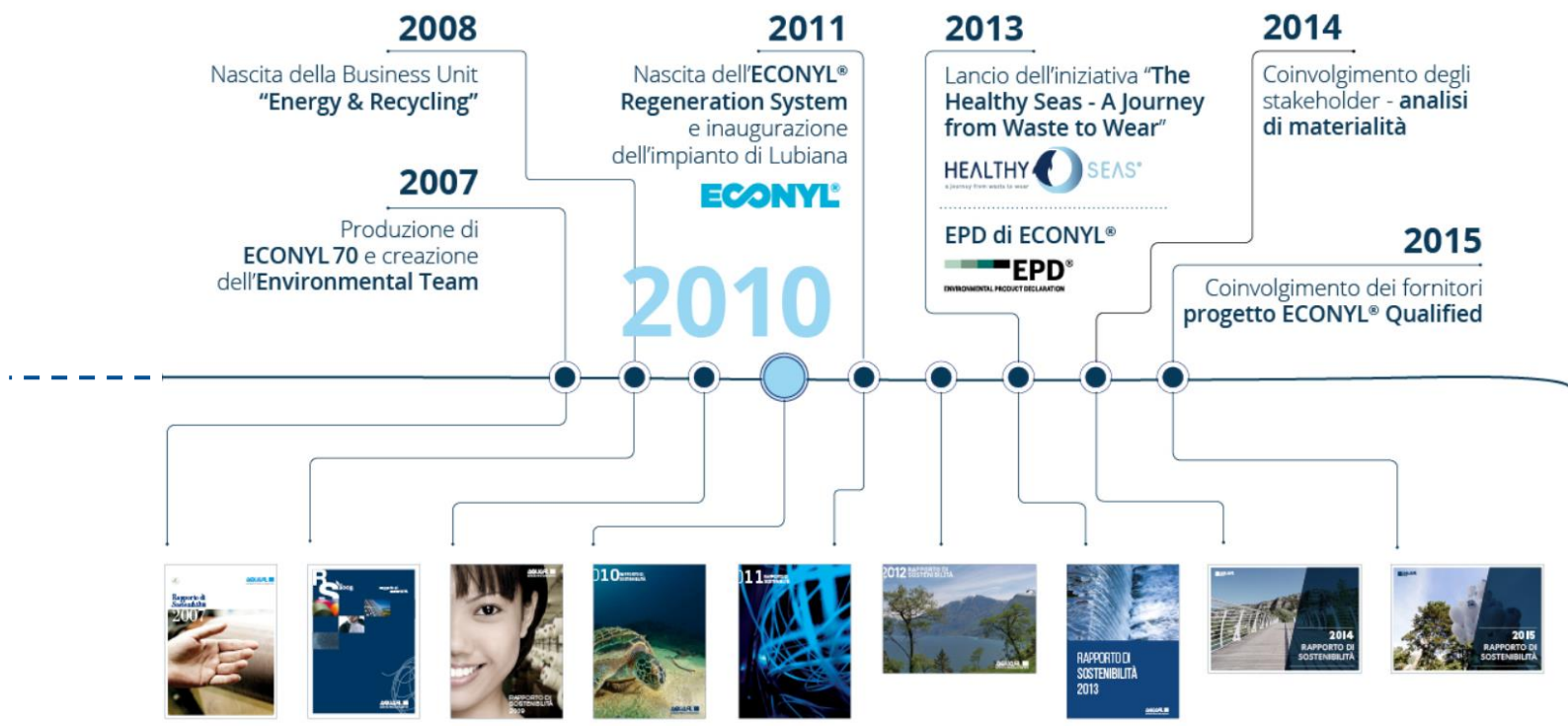


Employees Engagement





# LCA a supporto della strategia



Il ruolo fondamentale dei nostri fornitori: ECONYL® Qualified

Sviluppiamo con i nostri fornitori relazioni basate sui valori della trasparenza, della...

La partnership con clienti per progetti sostenibili

Crediamo che la collaborazione con i nostri clienti sia un elemento di forte valore aggiunto....

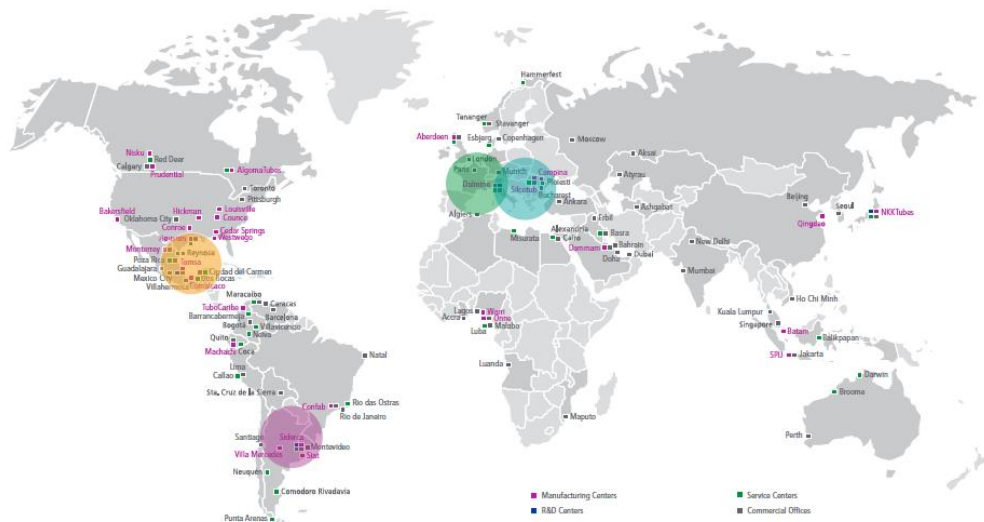




## EU PROJECTS FOCUS

LCE OWNS EXTENSIVE AND RELEVANT EXPERIENCE IN PARTICIPATING IN EUROPEAN AND INTERNATIONAL PROJECTS (I.E. H2020, LIFE, INCO, CRAFT, INTERREG, AND GROWTH) AND IS CURRENTLY INVOLVED IN SEVERAL **HORIZON 2020** AS WELL AS **LIFE+ PROJECTS**.





**Tenaris**

**Environmental Product Declaration**  
Oil Country Tubular Goods OCTG

BASED ON:  
PCR 2012:01  
version 2.2  
Construction products  
and construction services  
EN 15804:2014  
ISO 14025

CERTIFICATION N°:  
S-P-01064

DATE OF REVISION:  
2019/10/19 - rev. 2

**Tenaris**

**Environmental Product Declaration**  
Offshore and Onshore Seamless Structural Solutions

BASED ON:  
PCR 2012:01 (version 2.3)  
Construction products and  
construction services,  
Multiple UN CPC codes

CERTIFICATION N°:  
S-P-00723

ECO EPD REF. NO.:  
00000230

DECLARATION N°:  
6

REVISION DATE:  
2019/10/16

**Tenaris**

**Environmental Product Declaration**  
Offshore and Onshore Seamless Line Pipe Solutions

BASED ON:  
PCR 2012:01 (version 2.3)  
Construction products and  
construction services,  
Multiple UN CPC codes

CERTIFICATION N°:  
S-P-00916

ECO EPD REF. NO.:  
00000294

DECLARATION N°:  
7

REVISION DATE:  
2019/10/16

ISSUE DATE:  
2016/08/09

VALID UNTIL:  
2024/10/16

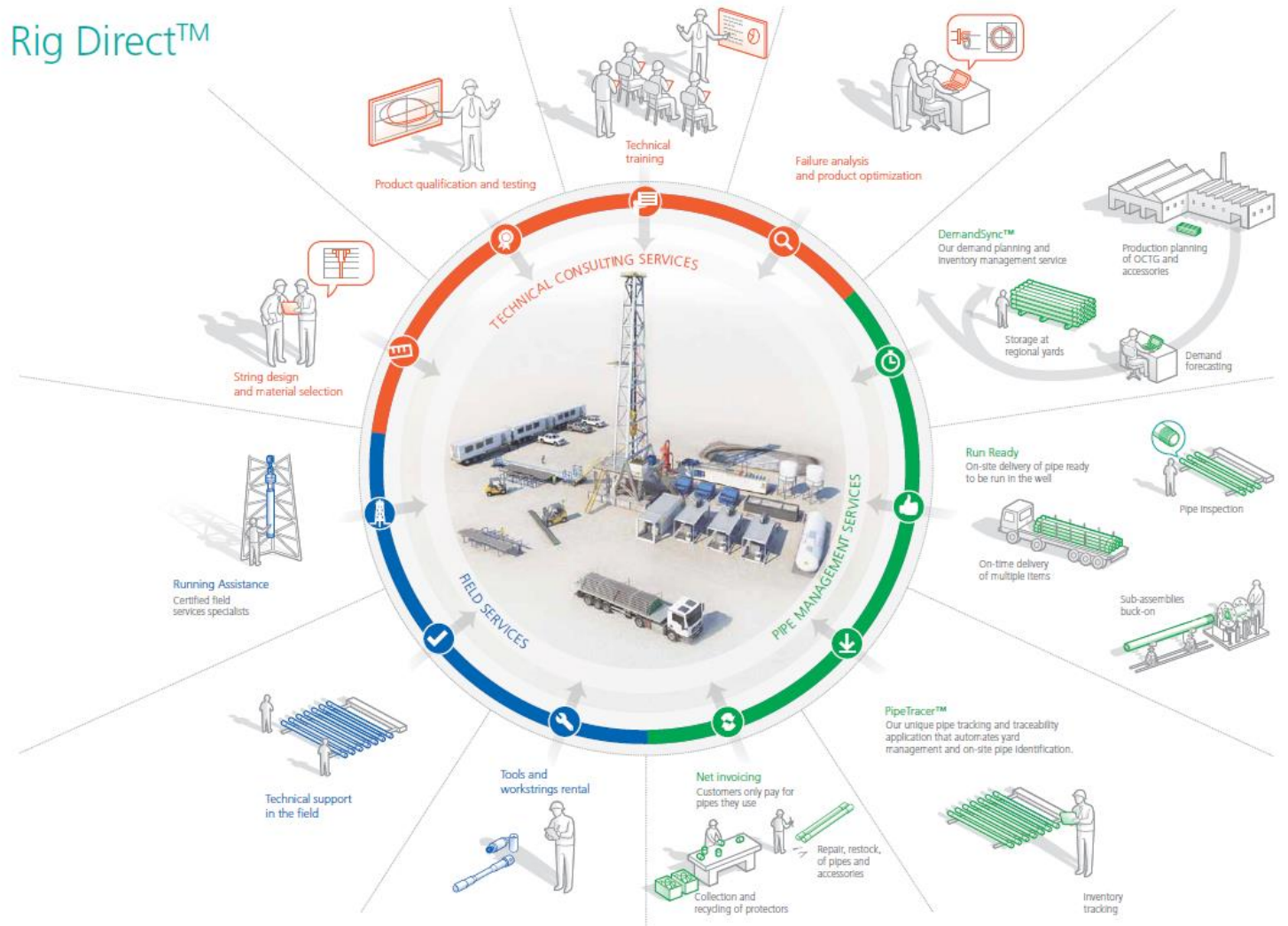
**EPD** ENVIRONMENTAL PRODUCT DECLARATION



# LCA per R&D e servizi al cliente



## Rig Direct™







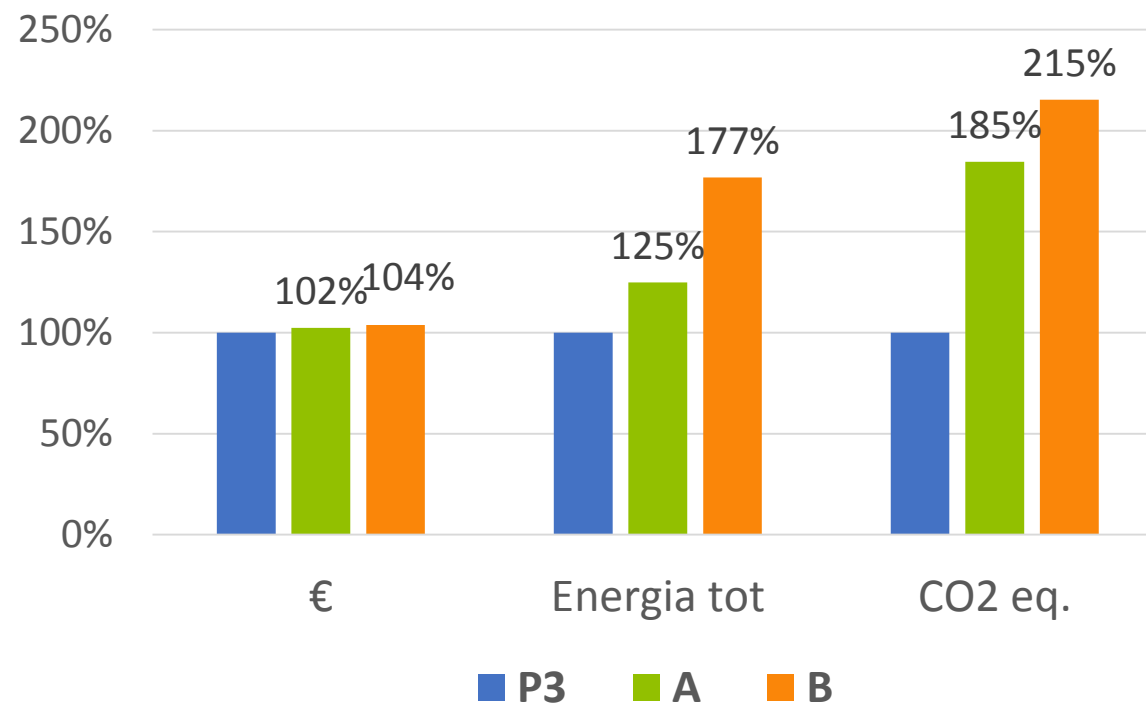
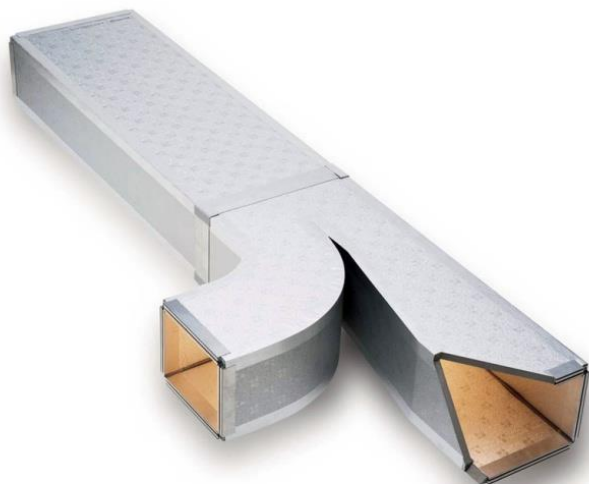
## **Buzzi Unicem**



- Le **Dichiarazioni ambientali di prodotto Cemento e Calcestruzzo**
- La **Scheda LEED/CAM** per la valutazione del contenuto di materiale riciclato del prodotto
- Un **Report sintetico**, per la Direzione, con gli indicatori principali



# LCA e LCC in ambito condizionamento



Differenza costi [€/30 anni]    + 10,3 mln    + 16,3 mln

METTIAMOCI  
**IN RIGA**



**GRAZIE PER L'ATTENZIONE**

*Stefano Rossi* – [rossi@studioilce.it](mailto:rossi@studioilce.it)

